

SMART IP CAMERA

3MP & 2MP WDR Outdoor Dome Network Camera

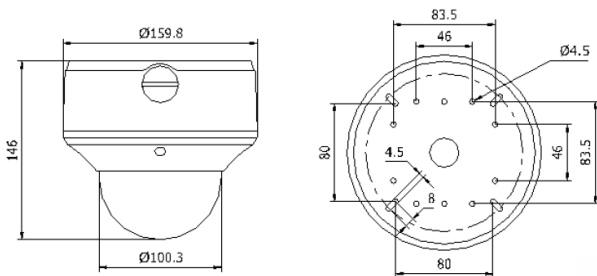
VNC-5370 / VNC-5270



Key Features

- Up to 2048 x 1536 high resolution
- FULL HD1080p video
- Smart Codec
- 120dB WDR, 3D DNR
- Triple streams
- On-board storage, up to 64GB
- Smart Focus: Motorized VF lens (Z Series)
- Smart VQD
- Smart Facial Detection
- Intrusion Detection
- Built-in heater & fan
- Vandal Proof
- EIS (Electronic Image Stabilization)
- Defog
- IP-66

Dimension



Technical Specifications

Model No	VNC-5370	VNC-5270
Image Sensor	1/3" progressive scan CMOS	
Min. Illumination	0.1 lux@F1.2, 0.14 lux@F1.4, 0 lux with IR	
Shutter Time	1s - 1/100,000s	
Slow Shutter	Yes	
Lens	2.8-12mm@F1.4, angle of view: 91.2°-28.3° (Z Series) : motorized VF Lens 8-20mm	
Angle Adjustment	Pan: 0° ~ 355°, tilt: 0° ~ 75°, rotation: 0° ~ 355°	
Auto IRIS	DC drive	
Day & Night	ICR (Auto/Schedule/Alarm Trigger)	
Digital Noise Reduction	3D DNR	
Wide Dynamic Range	120dB WDR	
Video Compression	H.264 / MPEG4 / MJPEG	
Video bit rate	32 Kbps - 16 Mbps	
Audio compression	G.711 / G.726 / MP2L2 *only for -S model	
Audio bit rate	64Kbps (G.711) / 16Kbps (G.726) *only for -S model	
Max. resolution	2048 x 1536	1920 x 1080
Frame rate	50 Hz: 20fps (2048 x 1536), 25fps (1920 x 1080) 25fps (1280 x 720) - 60 Hz: 20fps (2048 x 1536) 30fps (1920 x 1080), 30fps (1280 x 720)	
Image settings	Rotate mode, saturation, brightness, contrast, grayscale adjustable through client	
Features	Defog, BLC, EIS, ROI	
Picture overlay	128 x 128, BMP 24bit, zone configurable	
Network storage	NAS	
Alarm trigger	Intrusion detection, Defocus detection, Motion detection, Face detection, Tampering alarm, Network disconnect, IP address conflict, Storage exception	
Protocols	TCP/IP, ICMP, HTTP, HTTPS, FTP, DHCP, DNS, DDNS, RTP, RTSP, RTCP, PPPoE, NTP, UPnP, SMTP, SNMP, IGMP, 802.1X, QoS, IPv6, Bonjour	
Security	User authentication, watermark, IP address filtering	
System compatibility	ONVIF, PSIA, CGI	
Communication interface	1 RJ45 IOM / 100M ethernet port	
Video Output	1 Vp-p composite output (75 Ω/RCA)	
On-board Storage	Micro SD/SDHC/SDXC card slot, up to 64GB	
Operating conditions	-30°C ~ 60°C (-22°F ~ 140°F), humidity 95%	
Power supply	24 VAC ± 10%, PoE (802.3af)	
Power consumption	Max. 12W	
IR range	Up to 30m	
Ingress protection	IP66	
Dimensions	Φ 159.8 x 146 mm (Φ 6.29" x 5.75")	
Weight	2100 g (4.62 lbs)	

* (Z SERIES) Smart Focus: Motorized VF lens (optional)

* (S series) 1-ch audio I/O interface, 1ch alarm I/O interface (optional)